



# GMT MONTHLY MEMBERSHIP PROGRESS REPORT

Results as of: 4/30/2019

Multiple District 2

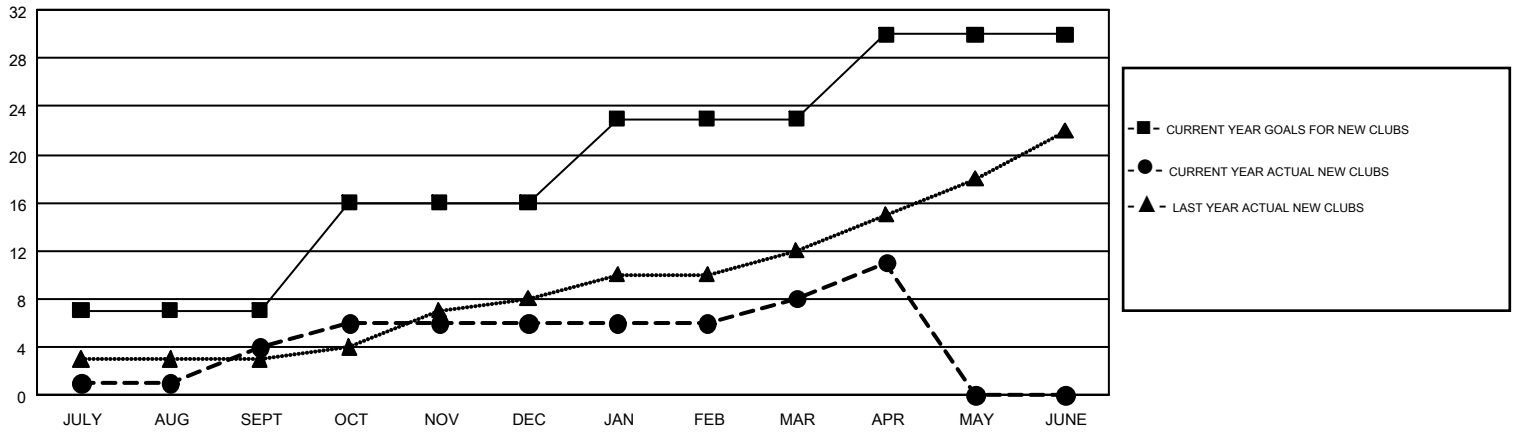
LOCATION: TEXAS

GMT: GREGORY GILLIAM

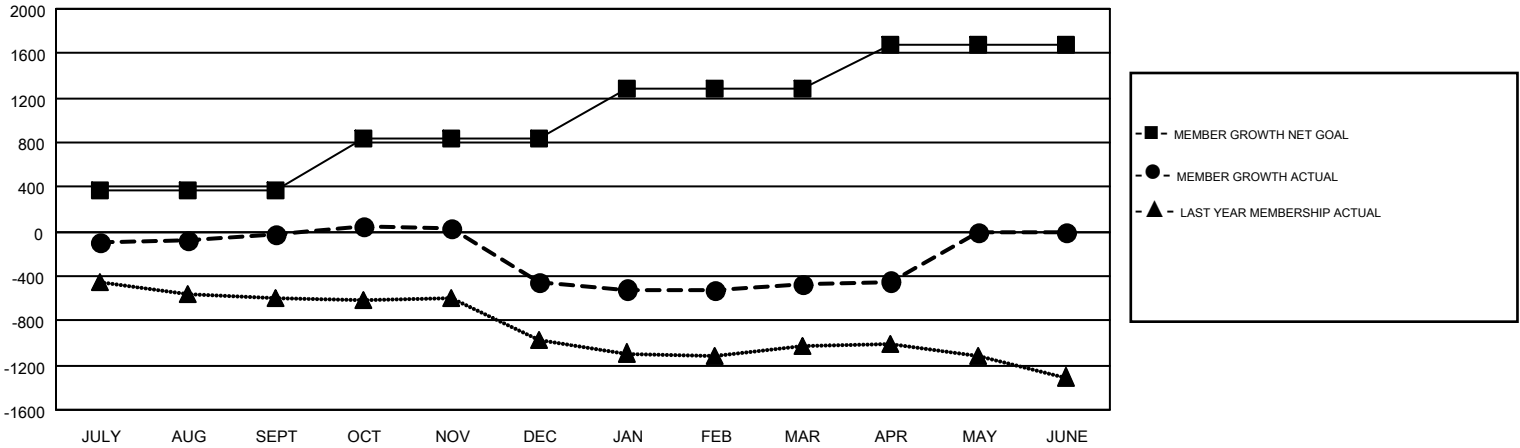
GMT CA 1

| Clubs                 |               |           |               | Members               |                        |                      |  |
|-----------------------|---------------|-----------|---------------|-----------------------|------------------------|----------------------|--|
| RESULTS FOR 2018-2019 |               |           |               | RESULTS FOR 2018-2019 |                        |                      |  |
| QUARTER               | NEW CLUB GOAL | NEW CLUBS | DROPPED CLUBS | QUARTER               | MEMBER GROWTH NET GOAL | MEMBER GROWTH ACTUAL | DROPPED MEMBERS ACTUAL (including transfers) |
| JULY/AUG/SEPT         | 7             | 4         | 7             | JULY/AUG/SEPT         | 373                    | 889                  | 816  |
| OCT/NOV/DEC           | 9             | 2         | 12            | OCT/NOV/DEC           | 459                    | 768                  | 1,152  |
| JAN/FEB/MAR           | 7             | 2         | 5             | JAN/FEB/MAR           | 451                    | 898                  | 783  |
| APR/MAY/JUNE          | 7             | 3         | 1             | APR/MAY/JUNE          | 402                    | 326                  | 292  |

GOALS AND ACTUAL NEW CLUBS CUMULATIVE



GOALS AND ACTUAL MEMBERS CUMULATIVE



|   |  |                                 |                 |
|---|--|---------------------------------|-----------------|
| DROPPED CLUBS: 25   | 531 CLUBS OF 856 ADDED 1 OR MORE NEW MEMBERS | <u>GENDER DISTRIBUTION</u>      |                 |
| <u>DROPPED MEMBERS</u>                                    |  | MALE                            | 15,778 (64.48%) |
| DECEASED  | 231  | FEMALE                          | 8,692 (35.52%)  |
| CLUB CANCELLED  | 192  | TOTAL FAMILY UNIT MEMBERS 3,759 |                 |
| OTHER   | 2,618  |                                 |                 |
| TOTAL   | 3,041  |                                 |                 |
| <a href="#">CLICK HERE FOR CUMULATIVE MEMBERSHIP DATA</a> |  |                                 |                 |
|   |  |                                 |                 |